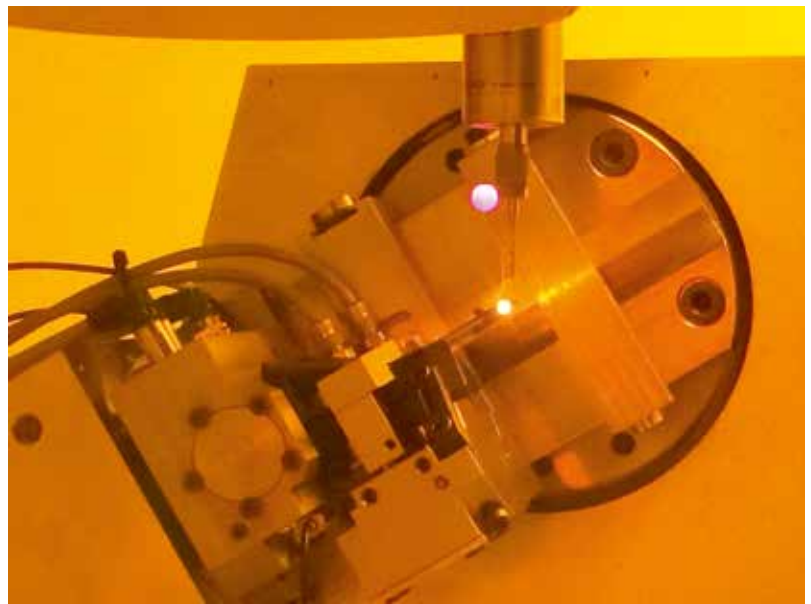


Leader of form cutters in PCD

Laser machining

The production of PCD cutting tools by laser machining is highly complex, requiring ultra-precise and sophisticated machines.



Laser sharpening generating no efforts on the tool, the mass and the kinetic of the machine have been developed specifically to ensure very fast and precise movements.

PCD turning inserts with chip breaker

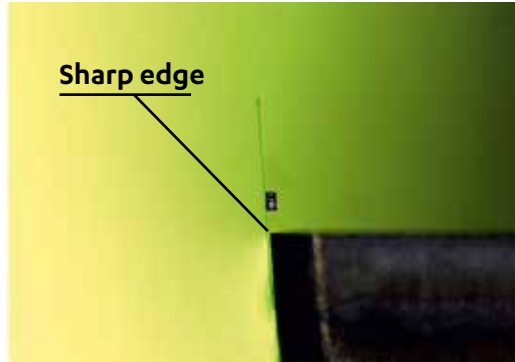
PCD turning inserts offer remarkable life and performance when machining. It is possible to shape the cutting face of the chip breaker by laser removal to avoid the chips twisting into a ball which is always annoying.



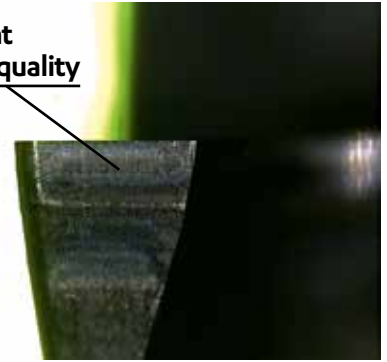
The 3 advantages of laser machining of cutting tools

1°

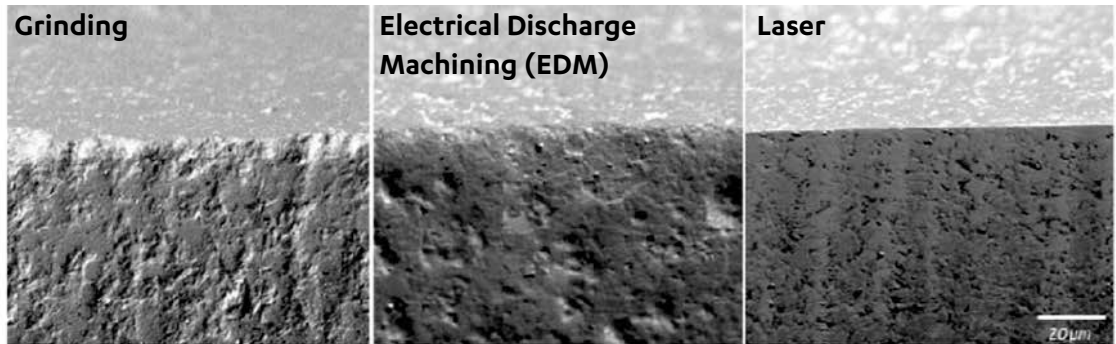
Very sharp cutting edges can be achieved. The laser cuts the synthetic diamond.



Excellent surface quality



Comparison of the edge quality.



2°

Very long tool life

3°

Allows the production of highly complex shapes from a dxf file provided by the customer.

