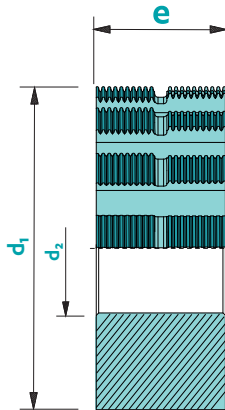
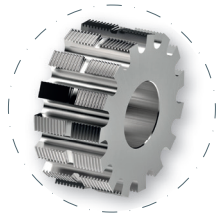


Duplex hob cutter



Material	Vc uncoated	Vc coated	Uncoated	Coated	Rec. Coating
Steel 20AP	70	90	■	□	TRIO (PO)
Steel Law 100X	70	90	■	□	TRIO (PO)
Carbon steel (Finemac)	50	60	■	■	TRIO (PO)
4C27A	60	70	■	■	TRIO (PO)
CK45	80	90	■	■	TRIO (PO)
316L	60	70	■	■	TRIO (PO)
Other stainless steel	60	70	■	■	TRIO (PO)
Leaded brass	150	170	■	-	SOLO (DA)
Lead-free brass	150	170	■	□	SOLO (DA)
CuBe (copper alloys)	100	120	■	□	SOLO (DA)
Nickel silver (Maillechort)	120	140	■	□	SOLO (DA)
Bronze	120	140	■	□	SOLO (DA)
Aluminium	200	220	■	-	SOLO (DA)
Titanium	80	90	■	-	-

not adapted - adapted ■ highly adapted ■

Tolerances d_2 : H3 e : ±0.01

Standard modules: 0.015 - 1.000. Other modules upon request

Available uncoated or coated

Z
12-15

Topping

λ
0°

γ
0°

CARB

$m \geq$
0.015

d_1	e	d_2	Z
6	5	3.5	12
6	6	3.5	12
8	5	3.5	12 / 15
8	6	3.5	12 / 15
8	6	4.5	12 / 15
8	8	4.5	12 / 15
10	5	3.5	12 / 15
10	6	3.5	12 / 15
10	5	4.5	12 / 15
10	6	4.5	12 / 15
12	6	3.5	15
12	5	4.5	15
12	6	4.5	15
12	8	4.5	15
12	10	4.5	15
12	6	5.0	15
12	8	5.0	15
12	6	6.0	15

d_1	e	d_2	Z
12	8	6.0	15
16	6	8.0	15
16	8	8.0	15
16	10	8.0	15
16	12	8.0	15
18	6	6.0	15
18	6	8.0	15
18	8	8.0	15
18	10	8.0	15
18	12	8.0	15
24	5	8.0	15
24	6	8.0	15
24	8	8.0	15
24	10	8.0	15
24	12	8.0	15
24	15	8.0	15
32	15	13.0	15

Option : No topping