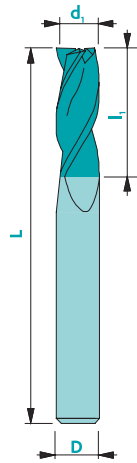
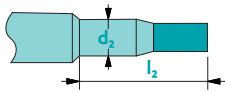


## Universal end mill Z3



Upon request



Material	Vc uncoated	Vc coated	Uncoated	Coated	Rec. Coating*
Steel < 700 N/mm <sup>2</sup>	100	130	□	■	Tisi (BQ)
Steel > 700 N/mm <sup>2</sup>	80	100	-	■	Tisi (BQ)
Stainless steel	50	70	□	■	Tisi (BQ)
Cast iron	60	100	□	■	Tisi (BQ)
Copper	130	160	□	■	Solo (DA)
Brass - Bronze	140	190	■	□	Solo (DA)
Aluminium	200	350	□	■	Solo (DA)
Gold - Silver	140	180	■	■	Solo (DA)
Platinum - Palladium	-	35	-	□	Solo (DA)
Superalloys	-	40	-	■	Trio (PO)
Titanium	40	60	■	■	RICO (ZB)

not adapted - adapted □ highly adapted ■

Tolerances d<sub>1</sub>: e8  
D: h5

Available uncoated or coated (see page 308)



Z3



λ 30°

γ 8-10°

CARB



$$ap=0.25xd_1$$



$$ae=0.5xd_1$$

$$ap=0.5xd_1$$

Art. n°	d <sub>1</sub>	l <sub>1</sub>	D	L		
					Uncoat.	Trio*
107-3d2.00	2.0	10	2.0	38	▲	▲
107-3d2.50	2.5	10	2.5	38	▲	▲
107-3d3.00	3.0	15	3.0	38	▲	▲
107-3d3.50	3.5	15	3.5	38	▲	▲
107-3d4.00	4.0	18	4.0	51	▲	▲
107-3d4.50	4.5	18	4.5	51	▲	▲
107-3d5.00	5.0	18	5.0	51	▲	▲
107-3d5.50	5.5	18	5.5	51	▲	▲
107-3d6.00	6.0	18	6.0	51	▲	▲
107-3d6.50	6.5	22	6.5	51	▲	▲
107-3d7.00	7.0	22	7.0	61	▲	▲
107-3d7.50	7.5	22	7.5	61	▲	▲
107-3d8.00	8.0	22	8.0	61	▲	▲
107-3d8.50	8.5	22	8.5	61	▲	▲
107-3d9.00	9.0	25	9.0	61	▲	▲
107-3d9.50	9.5	25	9.5	61	▲	▲
107-3d10.00	10.0	25	10.0	72	▲	▲
107-3d10.50	10.5	25	10.5	72	▲	▲
107-3d11.00	11.0	30	11.0	72	▲	▲
107-3d11.50	11.5	30	11.5	72	▲	▲
107-3d12.00	12.0	30	12.0	83	▲	▲
107-3d12.50	12.5	30	12.5	83	▲	▲
107-3d13.00	13.0	35	13.0	83	▲	▲
107-3d14.00	14.0	35	14.0	83	▲	▲
107-3d15.00	15.0	35	15.0	83	▲	▲
107-3d16.00	16.0	35	16.0	92	▲	▲
107-3d18.00	18.0	45	18.0	92	▲	▲
107-3d20.00	20.0	45	20.0	104	▲	▲

\* Prices for other coatings: contact us!

To order a coated tool, add the 2-letter coating code to the article number