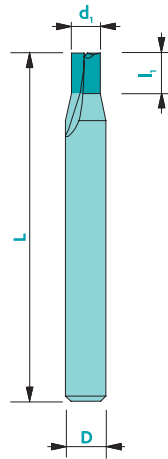
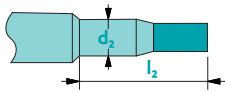


Straight cut end mill Z2



Upon request



Material	Vc uncoated	Vc coated	Uncoated	Coated	Rec. Coating*
Steel < 700 N/mm ²	-	60	-	□	Tisi (BQ)
Steel > 700 N/mm ²	-	-	-	-	-
Stainless steel	-	-	-	-	-
Cast iron	-	-	-	-	-
Copper	-	-	-	-	-
Brass - Bronze	80	110	■	□	Solo (DA)
Aluminium	-	-	-	-	-
Gold - Silver	50	60	■	■	Solo (DA)
Platinum - Palladium	-	-	-	-	-
Superalloys	-	-	-	-	-
Titanium	20	30	□	■	RICO (ZB)

not adapted - adapted □ highly adapted ■

Tolerances $d_1 \leq 1 \text{ mm} \triangleright 0/-0.01$ $D; h5$
 $d_1 > 1 \text{ mm} \triangleright 0/-0.02$
 $d_1 = D \triangleright d_1; e8$

Available uncoated or coated (see page 308)

Z2

Y0°

CARB

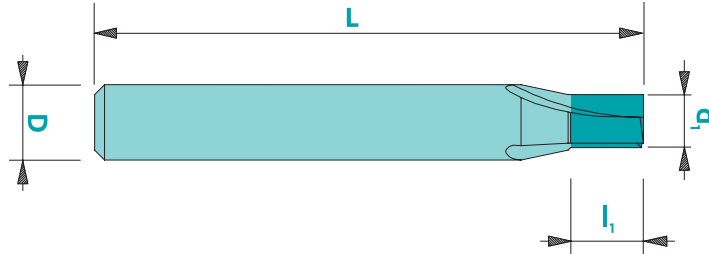
$ap=0.5d_1$

$ae=0.5d_1$
 $ap=0.5d_1$

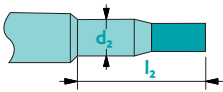
Art. n°	d ₁	l ₁	D	L	Coating		Art. n°	d ₁	l ₁	D	L	Coating	
					Uncoat.	Solo*						Uncoat.	Solo*
111-2d0.80	0.8	3.0	3	38	▲	▲	111-2d3.70	3.7	6.0	4	38	▲	▲
111-2d0.90	0.9	3.0	3	38	▲	▲	111-2d3.80	3.8	6.0	4	38	▲	▲
111-2d1.00	1.0	3.0	3	38	▲	▲	111-2d3.90	3.9	6.0	4	38	▲	▲
111-2d1.10	1.1	3.0	3	38	▲	▲	111-2d4.00	4.0	6.0	4	38	▲	▲
111-2d1.20	1.2	3.0	3	38	▲	▲	111-2d5.00	5.0	8.0	6	51	▲	▲
111-2d1.30	1.3	3.0	3	38	▲	▲	111-2d6.00	6.0	8.0	6	51	▲	▲
111-2d1.40	1.4	3.0	3	38	▲	▲	111-2d7.00	7.0	9.0	7	51	▲	▲
111-2d1.50	1.5	4.0	3	38	▲	▲	111-2d8.00	8.0	9.0	8	51	▲	▲
111-2d1.60	1.6	4.0	3	38	▲	▲	111-2d9.00	9.0	12.0	10	51	▲	▲
111-2d1.70	1.7	4.0	3	38	▲	▲	111-2d10.00	10.0	12.0	10	51	▲	▲
111-2d1.80	1.8	4.0	3	38	▲	▲							
111-2d1.90	1.9	4.0	3	38	▲	▲							
111-2d2.00	2.0	5.0	3	38	▲	▲							
111-2d2.10	2.1	5.0	3	38	▲	▲							
111-2d2.20	2.2	5.0	3	38	▲	▲							
111-2d2.30	2.3	5.0	3	38	▲	▲							
111-2d2.40	2.4	5.0	3	38	▲	▲							
111-2d2.50	2.5	6.0	3	38	▲	▲							
111-2d2.60	2.6	6.0	3	38	▲	▲							
111-2d2.70	2.7	6.0	3	38	▲	▲							
111-2d2.80	2.8	6.0	3	38	▲	▲							
111-2d2.90	2.9	6.0	3	38	▲	▲							
111-2d3.00	3.0	6.0	3	38	▲	▲							
111-2d3.10	3.1	6.0	4	38	▲	▲							
111-2d3.20	3.2	6.0	4	38	▲	▲							
111-2d3.30	3.3	6.0	4	38	▲	▲							
111-2d3.40	3.4	6.0	4	38	▲	▲							
111-2d3.50	3.5	6.0	4	38	▲	▲							
111-2d3.60	3.6	6.0	4	38	▲	▲							

* Prices for other coatings: contact us!
 To order a coated tool, add the 2-letter coating code to the article number

Straight cut end mill Z1-3



Upon request



Available uncoated or coated (see page 308)

Z1-3



λ
0°

γ
0°

CARB



$ap=0.25d_1$



$ae=0.5xd_1$
 $ap=0.5xd_1$

Order

Quotation request

Dimensions : d_1 : _____ l_1 : _____ D : _____ Tolerances d_1 : _____ L : _____ Z : _____ d_2 : _____ l_2 : _____	Order No : _____
Coating : <input type="checkbox"/> Coated * : _____ <input type="checkbox"/> Uncoated	Quantity : _____
Company's stamp & date : _____	
Contact person : _____	

Standard dimensions of the bars : $\emptyset 3 \times L 38$, $\emptyset 4 \times L 38$, $\emptyset 6 \times L 38$, $\emptyset 6 \times L 51$, $\emptyset 8 \times L 61$, $\emptyset 10 \times L 72$, $\emptyset 12 \times L 83$, $\emptyset 16 \times L 92$, $\emptyset 20 \times L 104$

* Without information, the most suitable coating will be applied.