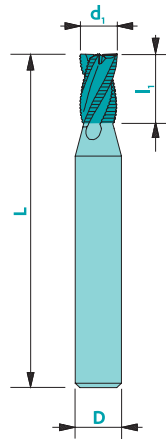
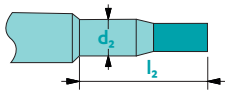


## Roughing end mill - fine pitch



Upon request



Material	Vc uncoated	Vc coated	Uncoated	Coated	Rec. Coating*
Steel < 700 N/mm <sup>2</sup>	100	130	□	■	Tisi (BQ)
Steel > 700 N/mm <sup>2</sup>	80	100	-	■	Tisi (BQ)
Stainless steel	50	70	□	■	Tisi (BQ)
Cast iron	60	100	□	■	Tisi (BQ)
Copper	130	160	□	■	Solo (DA)
Brass - Bronze	140	190	■	□	Solo (DA)
Aluminium	200	350	□	■	Solo (DA)
Gold - Silver	140	180	■	■	Solo (DA)
Platinum - Palladium	-	35	-	□	Solo (DA)
Superalloys	-	40	-	■	Trio (PO)
Titanium	40	60	■	■	RICO (ZB)

not adapted - adapted □ highly adapted ■

Tolerances d<sub>1</sub>: 0/-0.1  
D: h5

Available uncoated or coated (see page 308)



Z2-4



λ  
30°

γ  
8-10°

CARB



ap=0.25xd<sub>1</sub>



ae=0.5xd<sub>1</sub>  
ap=0.5xd<sub>1</sub>

Art. n°	d <sub>1</sub>	l <sub>1</sub>	D	L	Z	Coating	
						Uncoat.	Trio*
115-1d1.50	1.5	3	6	51	2	▲	▲
115-1d2.00	2.0	4	6	51	2	▲	▲
115-1d2.50	2.5	5	6	51	2	▲	▲
115-1d3.00	3.0	6	6	51	3	▲	▲
115-1d3.50	3.5	7	6	51	3	▲	▲
115-1d4.00	4.0	8	6	51	3	▲	▲
115-1d4.50	4.5	9	6	51	3	▲	▲
115-1d5.00	5.0	10	6	51	3	▲	▲
115-1d5.50	5.5	11	6	51	3	▲	▲
115-1d6.00	6.0	12	6	51	3	▲	▲
115-1d7.00	7.0	14	8	61	3	▲	▲
115-1d8.00	8.0	16	10	72	4	▲	▲
115-1d9.00	9.0	18	10	72	4	▲	▲
115-1d10.00	10.0	20	10	72	4	▲	▲
115-1d12.00	12.0	24	12	83	4	▲	▲
115-1d14.00	14.0	28	14	83	4	▲	▲
115-1d16.00	16.0	32	16	92	4	▲	▲
115-1d20.00	20.0	40	20	104	4	▲	▲

\* Prices for other coatings: contact us!

To order a coated tool, add the 2-letter coating code to the article number