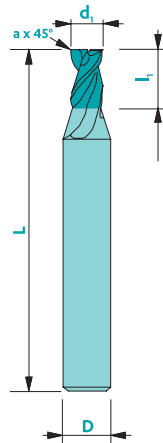
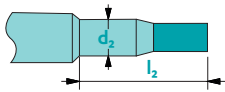




Upon request



Material	Vc uncoated	Vc coated	Uncoated	Coated	Rec. Coating*
Steel < 700 N/mm ²	-	-	-	-	-
Steel > 700 N/mm ²	-	-	-	-	-
Stainless steel	-	-	-	-	-
Cast iron	-	-	-	-	-
Copper	170	500	□	■	Solo (DA)
Brass - Bronze	160	500	□	■	Solo (DA)
Aluminium	280	600	□	■	Solo (DA)
Gold - Silver	160	300	□	■	Solo (DA)
Platinum - Palladium	-	-	-	-	-
Superalloys	300	800	□	■	Trio (PO)
Titanium	-	-	-	-	-

not adapted - adapted □ highly adapted ■

Tolerances $d_1 \leq 1 \text{ mm} \rightarrow 0/-0.01$ $D: h5$
 $d_1 > 1 \text{ mm} \rightarrow 0/-0.02$
 $d_1 = D \rightarrow d_1: e8$

Available uncoated or coated (see page 308)



Z2



λ
40°

γ
25°

CARB



$ap=0.5xd_1$



$ae=0.15xd_1$
 $ap=1.5xd_1$

Art. n°	d_1	l_1	D	L	a	Coating	
						Uncoat.	Solo*
3200d0.50	0.5	1.0	6	57	0.03	▲	▲
3200d1.00	1.0	2.0	6	57	0.03	▲	▲
3200d1.50	1.5	3.0	6	57	0.04	▲	▲
3200d2.00	2.0	4.0	6	57	0.04	▲	▲
3200d2.50	2.5	5.0	6	57	0.04	▲	▲
3200d3.00	3.0	6.0	6	57	0.04	▲	▲
3200d3.50	3.5	7.0	6	57	0.05	▲	▲
3200d4.00	4.0	8.0	6	57	0.05	▲	▲
3200d5.00	5.0	10.0	6	57	0.05	▲	▲
3200d6.00	6.0	12.0	6	57	0.07	▲	▲
3200d8.00	8.0	16.0	8	63	0.07	▲	▲
3200d10.00	10.0	20.0	10	72	0.10	▲	▲
3200d12.00	12.0	24.0	12	83	0.15	▲	▲

* Prices for other coatings: contact us!
 To order a coated tool, add the 2-letter coating code to the article number