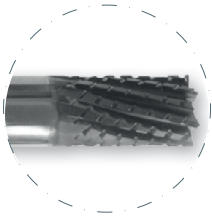
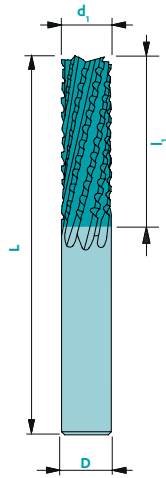
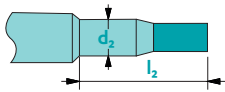


9630

EXPERT end mill with crossed teeth for composite materials



Upon request



Material	Vc uncoated	Vc coated	Uncoated	Coated	Rec. Coating*
Composite	250	300	-	■	NEO (FC)
Steel < 700 N/mm ²	-	-	-	-	-
Steel > 700 N/mm ²	-	-	-	-	-
Stainless steel	-	-	-	-	-
Cast iron	-	-	-	-	-
Copper	-	-	-	-	-
Brass - Bronze	-	-	-	-	-
Aluminium	-	-	-	-	-
Gold - Silver	-	-	-	-	-
Platinum - Palladium	-	-	-	-	-
Superalloys	-	-	-	-	-
Titanium	-	-	-	-	-

not adapted - adapted □ highly adapted ■

Tolerances $d_1 \leq 1 \text{ mm} \triangleright 0/-0.01$ $D: h5$
 $d_1 > 1 \text{ mm} \triangleright 0/-0.02$
 $d_1: e8$

Available uncoated or coated (see page 308)



Z7-14



CARB



$ap=0.25d_1$



$ae=0.5d_1$
 $ap=0.5d_1$

Art. n°	d_1	l_1	D	L	Z	NEO (FC)*
9630d3.00FC	3.0	12	3	38	7	▲
9630d4.00FC	4.0	16	4	38	7	▲
9630d6.00FC	6.0	18	6	51	8	▲
9630d8.00FC	8.0	24	8	61	10	▲
9630d10.00FC	10.0	30	10	72	12	▲
9630d12.00FC	12.0	36	12	83	14	▲

* Prices for other coatings: contact us!

To order a coated tool, add the 2-letter coating code to the article number