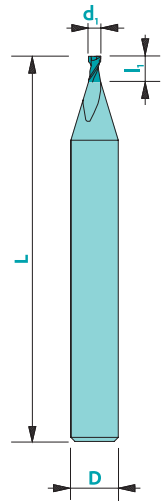
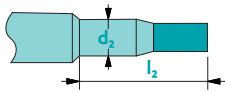


Micro end mill Z2



Upon request



Material	Vc uncoated	Vc coated	Uncoated	Coated	Rec. Coating*
Steel < 700 N/mm ²	100	130	□	■	Tisi (BQ)
Steel > 700 N/mm ²	80	100	-	■	Tisi (BQ)
Stainless steel	50	70	□	■	Tisi (BQ)
Cast iron	60	100	□	■	Tisi (BQ)
Copper	130	160	□	■	Solo (DA)
Brass - Bronze	140	190	■	□	Solo (DA)
Aluminium	200	350	□	■	Solo (DA)
Gold - Silver	140	180	■	■	Solo (DA)
Platinum - Palladium	-	35	-	□	Solo (DA)
Superalloys	-	40	-	■	Trio (PO)
Titanium	40	60	■	■	RICO (ZB)

not adapted - adapted □ highly adapted ■

Tolerances $d_1 \leq 1 \text{ mm} \rightarrow 0/-0.01$ D: h5
 $d_1 > 1 \text{ mm} \rightarrow 0/-0.02$

Available uncoated or coated (see page 308)

Z2

λ 35° **Y 8-10°**

CARB

$ap=0.25xd_1$ $ae=0.5xd_1$
 $ap=0.5xd_1$

Art. n°	d ₁	l ₁	D	L	Coating		Art. n°	d ₁	l ₁	D	L	Coating	
					Uncoat.	Trio*						Uncoat.	Trio*
102d0.08	0.08	0.16	3	38	▲	▲	102d0.75	0.75	1.60	3	38	▲	▲
102d0.10	0.10	0.20	3	38	▲	▲	102d0.80	0.80	1.60	3	38	▲	▲
102d0.11	0.11	0.20	3	38	▲	▲	102d0.85	0.85	1.80	3	38	▲	▲
102d0.12	0.12	0.20	3	38	▲	▲	102d0.90	0.90	1.80	3	38	▲	▲
102d0.13	0.13	0.30	3	38	▲	▲	102d0.95	0.95	2.00	3	38	▲	▲
102d0.14	0.14	0.30	3	38	▲	▲	102d1.00	1.00	2.00	3	38	▲	▲
102d0.15	0.15	0.30	3	38	▲	▲	102d1.05	1.05	2.20	3	38	▲	▲
102d0.16	0.16	0.30	3	38	▲	▲	102d1.10	1.10	2.20	3	38	▲	▲
102d0.17	0.17	0.30	3	38	▲	▲	102d1.15	1.15	2.40	3	38	▲	▲
102d0.18	0.18	0.40	3	38	▲	▲	102d1.20	1.20	2.40	3	38	▲	▲
102d0.19	0.19	0.40	3	38	▲	▲	102d1.25	1.25	2.60	3	38	▲	▲
102d0.20	0.20	0.40	3	38	▲	▲	102d1.30	1.30	2.60	3	38	▲	▲
102d0.21	0.21	0.40	3	38	▲	▲	102d1.35	1.35	2.80	3	38	▲	▲
102d0.22	0.22	0.40	3	38	▲	▲	102d1.40	1.40	2.80	3	38	▲	▲
102d0.23	0.23	0.50	3	38	▲	▲	102d1.45	1.45	3.00	3	38	▲	▲
102d0.24	0.24	0.50	3	38	▲	▲	102d1.50	1.50	3.00	3	38	▲	▲
102d0.25	0.25	0.60	3	38	▲	▲	102d1.55	1.55	3.20	3	38	▲	▲
102d0.26	0.26	0.60	3	38	▲	▲	102d1.60	1.60	3.20	3	38	▲	▲
102d0.27	0.27	0.60	3	38	▲	▲	102d1.65	1.65	3.40	3	38	▲	▲
102d0.28	0.28	0.60	3	38	▲	▲	102d1.70	1.70	3.40	3	38	▲	▲
102d0.29	0.29	0.60	3	38	▲	▲	102d1.75	1.75	3.60	3	38	▲	▲
102d0.30	0.30	0.60	3	38	▲	▲	102d1.80	1.80	3.60	3	38	▲	▲
102d0.35	0.35	0.80	3	38	▲	▲	102d1.85	1.85	4.00	3	38	▲	▲
102d0.40	0.40	0.80	3	38	▲	▲	102d1.90	1.90	4.00	3	38	▲	▲
102d0.45	0.45	1.00	3	38	▲	▲	102d1.95	1.95	6.00	3	38	▲	▲
102d0.50	0.50	1.00	3	38	▲	▲	102d2.00	2.00	6.00	3	38	▲	▲
102d0.55	0.55	1.20	3	38	▲	▲	102d2.05	2.05	7.00	3	38	▲	▲
102d0.60	0.60	1.20	3	38	▲	▲	102d2.10	2.10	7.00	3	38	▲	▲
102d0.65	0.65	1.40	3	38	▲	▲	102d2.15	2.15	7.00	3	38	▲	▲
102d0.70	0.70	1.40	3	38	▲	▲	102d2.20	2.20	7.00	3	38	▲	▲

* Prices for other coatings: contact us!
 To order a coated tool, add the 2-letter coating code to the article number



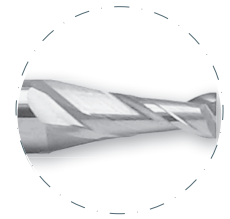
Micro end mill Z2

102

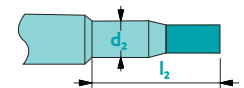
Continuation

Art. n°	d ₁	l ₁	D	L		
					Uncoat.	Trio*
102d2.25	2.25	7.00	3	38	▲	▲
102d2.30	2.30	7.00	3	38	▲	▲
102d2.35	2.35	7.00	3	38	▲	▲
102d2.40	2.40	7.00	3	38	▲	▲
102d2.45	2.45	7.00	3	38	▲	▲
102d2.50	2.50	7.00	3	38	▲	▲
102d2.60	2.60	7.00	3	38	▲	▲
102d2.70	2.70	7.00	3	38	▲	▲
102d2.80	2.80	7.00	3	38	▲	▲
102d2.90	2.90	7.00	3	38	▲	▲

* Prices for other coatings: contact us!
To order a coated tool, add the 2-letter coating code to the article number



Upon request



Available uncoated or coated (see page 308)

Z2



λ 35° γ 8-10°

CARB



ap=0.25xd₁



ae=0.5xd₁
ap=0.5xd₁