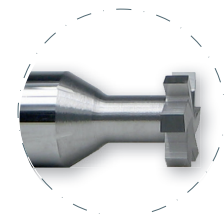
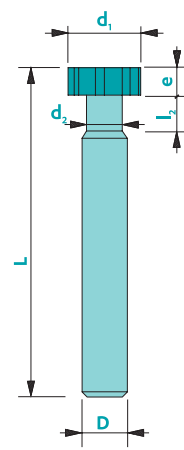


T-slot cutters straight toothing - 2 cuts

Material	Vc uncoated	Vc coated	Uncoated	Coated	Rec. Coating*
Steel < 700 N/mm ²	100	130	□	■	Tisi (BQ)
Steel > 700 N/mm ²	80	100	-	■	Tisi (BQ)
Stainless steel	50	70	□	■	Tisi (BQ)
Cast iron	60	100	□	■	Tisi (BQ)
Copper	130	160	□	■	Solo (DA)
Brass - Bronze	140	190	■	□	Solo (DA)
Aluminium	200	350	□	■	Solo (DA)
Gold - Silver	140	180	■	■	Solo (DA)
Platinum - Palladium	-	35	-	□	Solo (DA)
Superalloys	-	40	-	■	Trio (PO)
Titanium	40	60	■	■	RICO (ZB)

not adapted - adapted □ highly adapted ■



Tolerances
 $d_1 < D \rightarrow d_1: 0/-0.02$
 $d_1 > D \rightarrow d_1: 0/-0.02$
 $d_1 = D \rightarrow d_1: e8$
 $l_2: +0.2/-0$
 $d_2: 0/-0.5$
 $e: +0.01/-0.01$
 D: h5

Art. n°	d ₁	e*	d ₂	l ₂	D	L	Z			Coating	
							gold	stainless	brass	Uncoat.	Trio*
117d1.00e#.#Z#	1.0	0.2-0.6	0.5	1	3	38	3	5	5	▲	▲
117d2.00e#.#Z#	2.0	0.2-1.0	1.0	2	4	38	3	5	6	▲	▲
117d3.00e#.#Z#	3.0	0.2-1.5	1.5	2	4	38	3	5	6	▲	▲
117d4.00e#.#Z#	4.0	0.2-1.5	2.5	3	4	38	3	5	6	▲	▲
117d5.00e#.#Z#	5.0	0.5-1.5	3.0	3	5	38	3	5	6	▲	▲
117d6.00e#.#Z#	6.0	0.5-2.5	3.5	4	6	38	4	6	8	▲	▲
117d8.00e#.#Z#	8.0	0.5-3.0	4.0	5	8	51	4-5	8	10	▲	▲
117d10.00e#.#Z#	10.0	0.5-4.0	5.0	5	10	51	4-5	10	12	▲	▲
117d12.00e#.#Z#	12.0	0.5-4.0	6.0	6	10	51	5-6	12-14	16	▲	▲
117d15.00e#.#Z#	15.0	0.5-5.0	8.0	8	10	61	5-8	14-16	18	▲	▲
117d16.00e#.#Z#	16.0	0.5-2.9	8.0	8	10	61	5-8	16-18	20	▲	▲
117d16.00e#.#Z#	16.0	3.0-6.0	8.0	8	10	61	5-8	16-18	20	▲	▲
117d18.00e#.#Z#	18.0	0.5-2.9	8.0	8	10	61	6-10	18-20	24	▲	▲
117d18.00e#.#Z#	18.0	3.0-6.0	8.0	8	10	61	6-10	18-20	24	▲	▲
117d20.00e#.#Z#	20.0	0.5-2.9	8.0	8	10	61	6-12	20-22	24	▲	▲
117d20.00e#.#Z#	20.0	3.0-6.0	8.0	8	10	61	6-12	20-22	24	▲	▲
117d25.00e#.#Z#	25.0	0.5-3.9	8.0	8	10	61	8-16	24-28	32	▲	▲
117d25.00e#.#Z#	25.0	4.0-8.0	8.0	8	10	61	8-16	24-28	32	▲	▲
117d30.00e#.#Z#	30.0	0.5-3.9	8.0	8	10	61	10-20	30-34	36	▲	▲
117d30.00e#.#Z#	30.0	4.0-8.0	8.0	8	10	61	10-20	30-34	36	▲	▲

* e : available thickness: every 0.1 mm
 ** Z: even number only

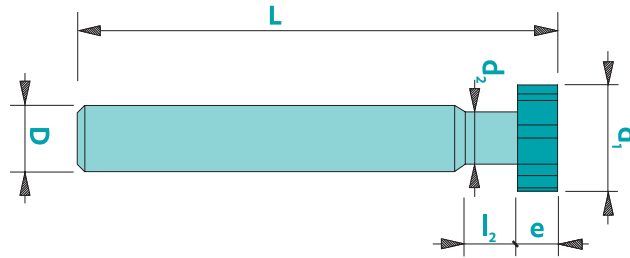
* Prices for other coatings: contact us!
 To order a coated tool, add the 2-letter coating code to the article number

Available uncoated or coated (see page 308)

Z3-36

 λ 0° γ 6-15°
CARB

T-slot cutters straight toothing - 2 cuts



Available uncoated or coated (see page 308)

Z3-36

0° **6-15°**

CARB

Order Quotation request

Dimensions : d ₁ : _____ e: _____ d ₂ : _____ l ₂ : _____ D: _____ L: _____ Z: _____		Coating : <input type="checkbox"/> Uncoated <input type="checkbox"/> Coated* : _____	
Cut : <input type="checkbox"/> right cut <input type="checkbox"/> left cut	Machined material : _____	Quantity : _____	Order No : _____
Company's stamp & date : _____		Contact person : _____	

* Without information, the most suitable coating will be applied.