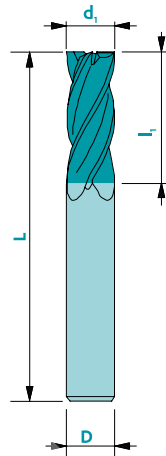
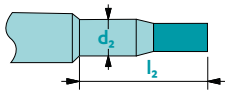




Sur demande



Matière	Vc non rev.	Vc rev.	Brut	Revêtu	Rev. recommand.
Acier < 700 N/mm ²	100	130	-	■	Trio
Acier > 700 N/mm ²	80	100	-	■	Trio
Acier inox	50	70	-	■	Trio
Fonte	60	100	-	■	Nemo
Cuivre	130	160	-	■	Solo
Laiton - Bronze	140	190	-	□	Solo
Aluminium	200	350	-	■	Solo
Or - Argent	140	180	-	■	Solo
Platine - Palladium	-	35	-	□	Solo
Superalliages	-	40	-	■	Trio
Titane	40	60	-	■	Rico

pas adapté - adapté □ très adapté ■

Tolérances $d_1 \leq 1 \text{ mm} \rightarrow +0/-0.01$ D: h5
 $d_1 > 1 \text{ mm} \rightarrow +0/-0.02$
 $d_1 = D \rightarrow d_1: e8$

Disponible revêtu
uniquement
(voir page 61)



Z4



λ
35-40°

γ
8°

SUB-CARFINE

N



$ap = 1 \times d_1$

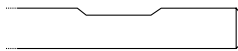


$ae = 1 \times d_1$
 $ap = 2.0 \times d_1$

Art. n°	d_1	l_1	λ	D	L	TRIO*
1620d1.00PO	1.0	2	0.02	6	51	▲
1620d1.50PO	1.5	3	0.02	6	51	▲
1620d2.00PO	2.0	4	0.02	6	51	▲
1620d2.50PO	2.5	5	0.02	6	51	▲
1620d3.00PO	3.0	6	0.02	6	51	▲
1620d3.50PO	3.5	7	0.03	6	51	▲
1620d4.00PO	4.0	8	0.03	6	51	▲
1620d5.00PO	5.0	10	0.04	6	51	▲
1620d6.00PO	6.0	12	0.05	6	51	▲
1620d8.00PO	8.0	16	0.05	8	61	▲
1620d10.00PO	10.0	20	0.05	10	72	▲
1620d12.00PO	12.0	24	0.05	12	83	▲
1620d14.00PO	14.0	28	0.06	14	83	▲
1620d16.00PO	16.0	32	0.06	16	92	▲

* Prix des autres revêtements : contactez-nous!

Option : Plat Weldon



Sur demande : Z6